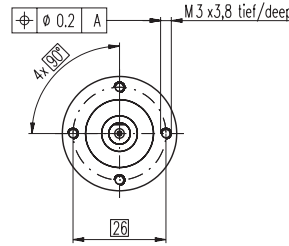
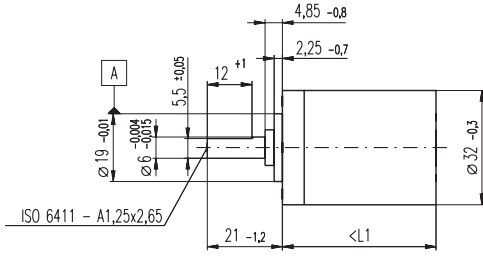


Planetary Gearhead GP 32 A $\varnothing 32$ mm, 0.75 - 4.5 Nm

Metal Version



M 1:2

Technical Data

Planetary Gearhead	straight teeth
Output shaft	stainless steel
Shaft diameter as option	8 mm
Bearing at output	ball bearing
Radial play, 5 mm from flange	max. 0.14 mm
Axial play	max. 0.4 mm
Max. radial load, 10 mm from flange	140 N
Max. permissible axial load	120 N
Max. permissible force for press fits	120 N
Sense of rotation, drive to output	=
Recommended input speed	< 6000 rpm
Recommended temperature range	-20 ... +100°C
Extended area as option	-35 ... +100°C

Option: Low-noise version

maxon gear

- Stock program
- Standard program
- Special program (on request)

Order Number

Gearhead Data	166155	166158	166163	166164	166169	166174	166179	166184	166187	166192	166197	166202
1 Reduction	3.7 : 1	14 : 1	33 : 1	51 : 1	111 : 1	246 : 1	492 : 1	762 : 1	1181 : 1	1972 : 1	2829 : 1	4380 : 1
2 Reduction absolute	26/7	676/49	529/16	17576/343	13824/125	421824/1715	86112/175	19044/25	10123776/8575	8626176/4375	495144/175	109503/25
3 Max. motor shaft diameter mm	6	6	3	6	4	4	3	4	3	4	3	3
Order Number	166156	166159		166165	166170	166175	166180	166185	166188	166193	166198	166203
1 Reduction	4.8 : 1	18 : 1		66 : 1	123 : 1	295 : 1	531 : 1	913 : 1	1414 : 1	2189 : 1	3052 : 1	5247 : 1
2 Reduction absolute	24/5	624/35		16224/245	6877/56	101062/343	331776/625	36501/40	2425488/1715	536406/245	1907712/625	839523/160
3 Max. motor shaft diameter mm	4	4		4	3	3	4	3	3	3	3	3
Order Number	166157	166160		166166	166171	166176	166181	166186	166189	166194	166199	166204
1 Reduction	5.8 : 1	21 : 1		79 : 1	132 : 1	318 : 1	589 : 1	1093 : 1	1526 : 1	2362 : 1	3389 : 1	6285 : 1
2 Reduction absolute	23/4	299/14		3887/49	3312/25	389376/1225	20631/35	279841/256	9345024/6125	2056668/875	474513/140	6436343/1024
3 Max. motor shaft diameter mm	3	3		3	3	4	3	3	4	3	3	3
Order Number	166161			166167	166172	166177	166182		166190	166195	166200	
1 Reduction	23 : 1			86 : 1	159 : 1	411 : 1	636 : 1		1694 : 1	2548 : 1	3656 : 1	
2 Reduction absolute	576/25			14976/175	1587/10	359424/875	79488/125		1162213/686	7962624/3125	457056/125	
3 Max. motor shaft diameter mm	4			4	3	4	3		3	4	3	
Order Number	166162			166168	166173	166178	166183		166191	166196	166201	
1 Reduction	28 : 1			103 : 1	190 : 1	456 : 1	706 : 1		1828 : 1	2623 : 1	4060 : 1	
2 Reduction absolute	138/5			3588/35	12167/64	89401/196	158171/224		2238912/1225	2056223/84	3637933/896	
3 Max. motor shaft diameter mm	3			3	3	3	3		3	3	3	
4 Number of stages	1	2	2	3	3	4	4	4	5	5	5	5
5 Max. continuous torque Nm	0.75	2.25	2.25	4.50	4.50	4.50	4.50	4.50	4.50	4.50	4.50	4.50
6 Intermittently permissible torque at gear output Nm	1.1	3.4	3.4	6.5	6.5	6.5	6.5	6.5	6.5	6.5	6.5	6.5
7 Max. efficiency %	80	75	75	70	70	60	60	60	50	50	50	50
8 Weight g	118	162	162	194	194	226	226	226	258	258	258	258
9 Average backlash no load °	0.7	0.8	0.8	1.0	1.0	1.0	1.0	1.0	1.0	1.0	1.0	1.0
10 Mass inertia gcm ²	1.5	0.8	0.8	0.7	0.7	0.7	0.7	0.7	0.7	0.7	0.7	0.7
11 Gearhead length L1 mm	26.4	36.3	36.3	43.0	43.0	49.7	49.7	49.7	56.4	56.4	56.4	56.4

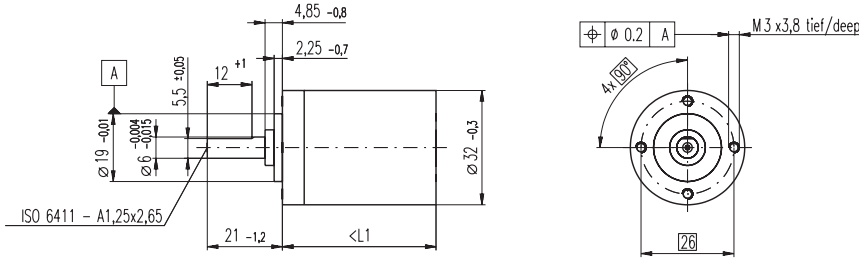


Combination

+ Motor	Page	+ Tacho / Brake	Page	Overall length [mm] = Motor length + gearhead length + (tacho / brake) + assembly parts											
RE 25, 10 W	76			81.0	90.9	90.9	97.6	97.6	104.3	104.3	104.3	111.0	111.0	111.0	111.0
RE 25, 10 W	76	MR	250	92.0	101.9	101.9	108.6	108.6	115.3	115.3	115.3	122.0	122.0	122.0	122.0
RE 25, 10 W	76	Enc 22	252	95.1	105.0	105.0	111.7	111.7	118.4	118.4	118.4	125.1	125.1	125.1	125.1
RE 25, 10 W	76	HED_5540	254/256	101.8	111.7	111.7	118.4	118.4	125.1	125.1	125.1	131.8	131.8	131.8	131.8
RE 25, 10 W	76	DCT 22	263	103.3	113.2	113.2	119.9	119.9	126.6	126.6	126.6	133.3	133.3	133.3	133.3
RE 25, 20 W	77			69.5	79.4	79.4	86.1	86.1	92.8	92.8	92.8	99.5	99.5	99.5	99.5
RE 25, 20 W	78			81.0	90.9	90.9	97.6	97.6	104.3	104.3	104.3	111.0	111.0	111.0	111.0
RE 25, 20 W	78	MR	250	92.0	101.9	101.9	108.6	108.6	115.3	115.3	115.3	122.0	122.0	122.0	122.0
RE 25, 20 W	78	Enc 22	252	95.1	105.0	105.0	111.7	111.7	118.4	118.4	118.4	125.1	125.1	125.1	125.1
RE 25, 20 W	78	HED_5540	254/256	101.8	111.7	111.7	118.4	118.4	125.1	125.1	125.1	131.8	131.8	131.8	131.8
RE 25, 20 W	78	DCT 22	263	103.3	113.2	113.2	119.9	119.9	126.6	126.6	126.6	133.3	133.3	133.3	133.3
RE 25, 20 W	78	AB 28	300	115.1	125.0	125.0	131.7	131.7	138.4	138.4	138.4	145.1	145.1	145.1	145.1
RE 25, 20 W	78	HED_5540/AB 28	254/300	132.2	142.1	142.1	148.8	148.8	155.5	155.5	155.5	162.2	162.2	162.2	162.2
RE 26, 18 W	79			85.3	95.2	95.2	101.9	101.9	108.6	108.6	108.6	115.3	115.3	115.3	115.3
RE 26, 18 W	79	MR	250	96.3	106.2	106.2	112.9	112.9	119.6	119.6	119.6	126.3	126.3	126.3	126.3
RE 26, 18 W	79	Enc 22	252	102.7	112.6	112.6	119.3	119.3	126.0	126.0	126.0	132.7	132.7	132.7	132.7
RE 26, 18 W	79	HED_5540	254/256	103.7	113.6	113.6	120.3	120.3	127.0	127.0	127.0	133.7	133.7	133.7	133.7
RE 26, 18 W	79	DCT 22	263	106.3	116.2	116.2	122.9	122.9	129.6	129.6	129.6	136.3	136.3	136.3	136.3
A-max 26	113-120			71.2	81.1	81.1	87.8	87.8	94.5	94.5	94.5	101.2	101.2	101.2	101.2
A-max 26	113-119	MEnc 13	262	78.3	88.2	88.2	94.9	94.9	101.6	101.6	101.6	108.3	108.3	108.3	108.3
A-max 26	114-120	MR	250	80.0	89.9	89.9	96.6	96.6	103.3	103.3	103.3	110.0	110.0	110.0	110.0
A-max 26	114-120	Enc 22	253	85.6	95.5	95.5	102.2	102.2	108.9	108.9	108.9	115.6	115.6	115.6	115.6
A-max 26	114-120	HED_5540	255/257	90.0	99.9	99.9	106.6	106.6	113.3	113.3	113.3	120.0	120.0	120.0	120.0
RE-max 29	143-146			71.2	81.1	81.1	87.8	87.8	94.5	94.5	94.5	101.2	101.2	101.2	101.2
RE-max 29	144/146	MR	250	80.0	89.9	89.9	96.6	96.6	103.3	103.3	103.3	110.0	110.0	110.0	110.0

Planetary Gearhead GP 32 A $\varnothing 32$ mm, 0.75 - 4.5 Nm

Metal Version



M 1:2

Technical Data

Planetary Gearhead	straight teeth
Output shaft	stainless steel
Shaft diameter as option	8 mm
Bearing at output	ball bearing
Radial play, 5 mm from flange	max. 0.14 mm
Axial play	max. 0.4 mm
Max. radial load, 10 mm from flange	140 N
Max. permissible axial load	120 N
Max. permissible force for press fits	120 N
Sense of rotation, drive to output	=
Recommended input speed	< 6000 rpm
Recommended temperature range	-20 ... +100°C
Extended area as option	-35 ... +100°C

Option: Low-noise version

- Stock program
- Standard program
- Special program (on request)

Order Number

	166155	166158	166163	166164	166169	166174	166179	166184	166187	166192	166197	166202
Gearhead Data												
1 Reduction	3.7 : 1	14 : 1	33 : 1	51 : 1	111 : 1	246 : 1	492 : 1	762 : 1	1181 : 1	1972 : 1	2829 : 1	4380 : 1
2 Reduction absolute	26/7	676/49	529/16	17576/343	13824/125	421824/1715	86112/175	19044/25	10123776/8575	8626176/4375	495144/175	109503/25
3 Max. motor shaft diameter mm	6	6	3	6	4	4	3	4	3	4	3	3
Order Number	166156	166159		166165	166170	166175	166180	166185	166188	166193	166198	166203
1 Reduction	4.8 : 1	18 : 1		66 : 1	123 : 1	295 : 1	531 : 1	913 : 1	1414 : 1	2189 : 1	3052 : 1	5247 : 1
2 Reduction absolute	24/5	624/35		16224/245	6877/56	101062/343	331776/625	36501/40	2425488/1715	536406/245	1907712/625	839523/160
3 Max. motor shaft diameter mm	4	4		4	3	3	4	3	3	3	3	3
Order Number	166157	166160		166166	166171	166176	166181	166186	166189	166194	166199	166204
1 Reduction	5.8 : 1	21 : 1		79 : 1	132 : 1	318 : 1	589 : 1	1093 : 1	1526 : 1	2362 : 1	3389 : 1	6285 : 1
2 Reduction absolute	23/4	299/14		3887/49	3312/25	389376/1225	20631/35	279841/256	9345024/6125	2066688/875	474513/140	6436343/1024
3 Max. motor shaft diameter mm	3	3		3	3	4	3	3	4	3	3	3
Order Number		166161		166167	166172	166177	166182		166190	166195	166200	
1 Reduction		23 : 1		86 : 1	159 : 1	411 : 1	636 : 1		1694 : 1	2548 : 1	3656 : 1	
2 Reduction absolute		576/25		14976/175	1587/10	359424/875	79488/125		1162213/686	7962624/3125	457056/125	
3 Max. motor shaft diameter mm		4		4	3	4	3		3	4	3	
Order Number		166162		166168	166173	166178	166183		166191	166196	166201	
1 Reduction		28 : 1		103 : 1	190 : 1	456 : 1	706 : 1		1828 : 1	2623 : 1	4060 : 1	
2 Reduction absolute		138/5		3588/35	12167/64	89401/196	158171/224		2238912/1225	2056223/84	3637933/896	
3 Max. motor shaft diameter mm		3		3	3	3	3		3	3	3	
4 Number of stages		1		2	2	3	3		4	4	5	
5 Max. continuous torque Nm		0.75		2.25	2.25	4.50	4.50		4.50	4.50	4.50	
6 Intermittently permissible torque at gear output Nm		1.1		3.4	3.4	6.5	6.5		6.5	6.5	6.5	
7 Max. efficiency %		80		75	75	70	70		60	60	50	
8 Weight g		118		162	162	194	194		226	226	258	
9 Average backlash no load °		0.7		0.8	0.8	1.0	1.0		1.0	1.0	1.0	
10 Mass inertia gcm ²		1.5		0.8	0.8	0.7	0.7		0.7	0.7	0.7	
11 Gearhead length L1 mm		26.4		36.3	36.3	43.0	43.0		49.7	49.7	56.4	



Combination

+ Motor	Page	+ Tacho / Brake	Page	Overall length [mm] = Motor length + gearhead length + (tacho / brake) + assembly parts											
RE 30, 60 W	80			94.5	104.4	104.4	111.1	111.1	117.8	117.8	117.8	124.5	124.5	124.5	124.5
RE 30, 60 W	80	MR	251	105.9	115.8	115.8	122.5	122.5	129.2	129.2	129.2	135.9	135.9	135.9	135.9
RE 35, 90 W	81			97.4	107.3	107.3	114.0	114.0	120.7	120.7	120.7	127.4	127.4	127.4	127.4
RE 35, 90 W	81	MR	251	108.8	118.7	118.7	125.4	125.4	132.1	132.1	132.1	138.8	138.8	138.8	138.8
RE 35, 90 W	81	HED_5540	254/256	118.4	128.3	128.3	135.0	135.0	141.7	141.7	141.7	148.4	148.4	148.4	148.4
RE 35, 90 W	81	DCT 22	263	115.5	125.4	125.4	132.1	132.1	138.8	138.8	138.8	145.5	145.5	145.5	145.5
RE 35, 90 W	81	AB 28	300	133.5	143.4	143.4	150.1	150.1	156.8	156.8	156.8	163.5	163.5	163.5	163.5
RE 35, 90 W	81	HEDS 5540 / AB 28	254/300	150.6	160.5	160.5	167.2	167.2	173.9	173.9	173.9	180.6	180.6	180.6	180.6
RE 36, 70 W	82			97.7	107.6	107.6	114.3	114.3	121.0	121.0	121.0	127.7	127.7	127.7	127.7
RE 36, 70 W	82	MR	251	109.1	119.0	119.0	125.7	125.7	132.4	132.4	132.4	139.1	139.1	139.1	139.1
RE 36, 70 W	82	HED_5540	254/256	118.7	128.6	128.6	135.3	135.3	142.0	142.0	142.0	148.7	148.7	148.7	148.7
RE 36, 70 W	82	DCT 22	263	115.8	125.7	125.7	132.4	132.4	139.1	139.1	139.1	145.8	145.8	145.8	145.8
A-max 32	121/123			89.4	99.3	99.3	106.0	106.0	112.7	112.7	112.7	119.4	119.4	119.4	119.4
A-max 32	122/124			88.0	97.9	97.9	104.6	104.6	111.3	111.3	111.3	118.0	118.0	118.0	118.0
A-max 32	122/124	MR	251	99.2	109.1	109.1	115.8	115.8	122.5	122.5	122.5	129.2	129.2	129.2	129.2
A-max 32	122/124	HED_5540	254/256	108.8	118.7	118.7	125.4	125.4	132.1	132.1	132.1	138.8	138.8	138.8	138.8
EC 32, 80 W	162			86.5	96.4	96.4	103.1	103.1	109.8	109.8	109.8	116.5	116.5	116.5	116.5
EC 32, 80 W	162	HED_5540	255/257	104.9	114.8	114.8	121.5	121.5	128.2	128.2	128.2	134.9	134.9	134.9	134.9
EC 32, 80 W	162	Res 26	264	106.6	116.5	116.5	123.2	123.2	129.9	129.9	129.9	136.6	136.6	136.6	136.6