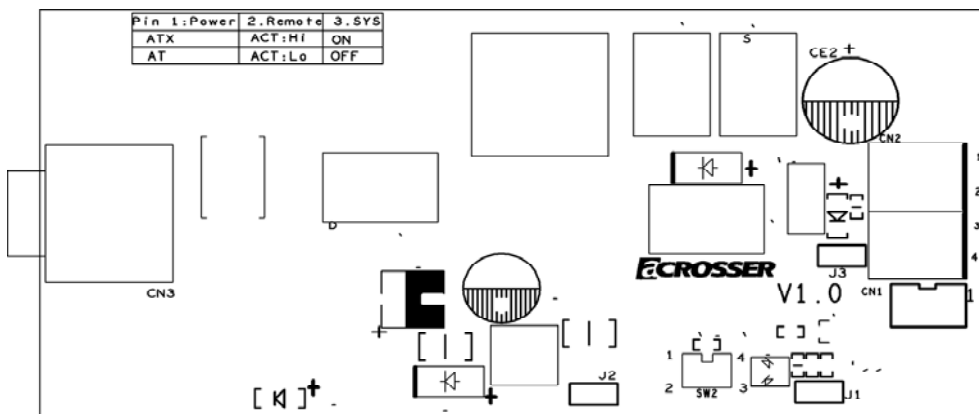


# AR-PW0932 User Manual

## TOP Side PLACEMENT



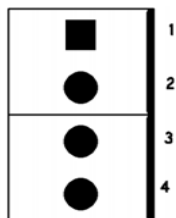
**CN1 : +5V stand by power supply and main power on/off trigger signal**



**CN1 Pin definition:**

Pin 1: +5VSB  
Pin 2: #PSON  
Pin 3: GND

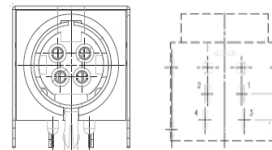
**CN2 : Main power supply connector**



**CN2 Pin definition:**

Pin 1: +Vout (5V or 12V output, select by J3)  
Pin 2: GND  
Pin 3/4: N.C.

**CN3 : Vin Connector (input range from DC 9V ~ 32V).**



**CN3 Pin definition:**

Pin 1/2: +VIN  
Pin 3/4: GND

**J1 : AT Mode Main Power On /Off Switch .**



**J1 definition:**

Short : Main Power On  
Open : Main Power Off

**J2 : Remote Main Power On /Off (There are 2 type could be select. It has to match SW2 definition)**



**J2 definition: (Normal pull high )**

Short : Pull-Low  
Open : Pull-High

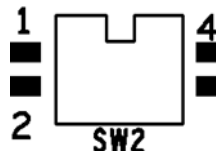
**J3 : Main power supply (CN2) voltage 5V/12V select setting**



**J3 definition:**

Short : +5V output  
Open : +12V output

**SW2 : Mode Select and Remote type Select**



**SW2 : definition:**

S1 On (S1 → Pin 3): Remote Input(J2) to turn on main power active by pull high  
S1 Off : (S1 → Pin 2) Remote Input(J2) to turn on main power active by pull low  
S2 On (S2 → Pin 4): ATX mode  
S2 Off (S2 → Pin 1): AT mode