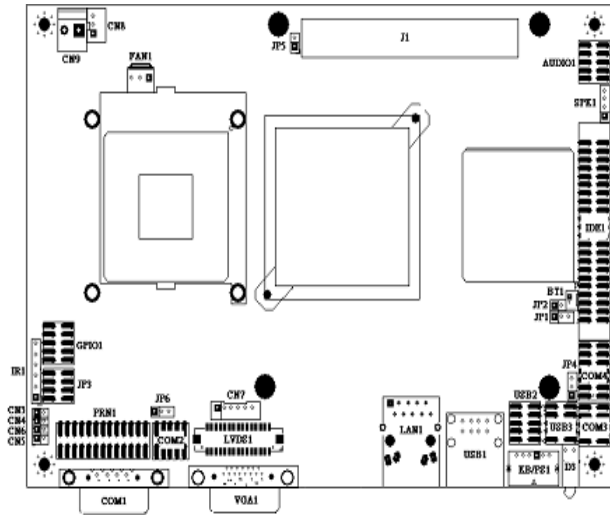
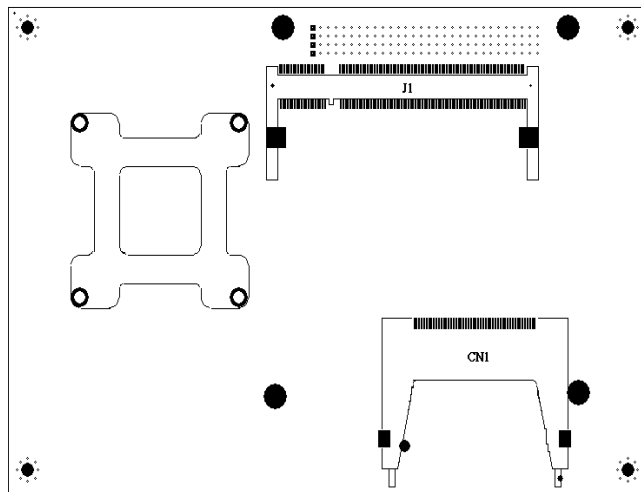


# AR-B1832 QUICK MANUAL

Version 1.0



TOP PLACEMENT

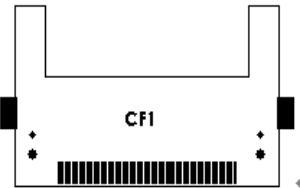


BOTTOM PLACEMENT

## • AUDI01 : Audio Pin Header

PIN.	DESCRIPTION.	PIN.	DESCRIPTION.
1.	LINE_OUT_R.	2.	LINE_OUT_L.
3.	GND.	4.	GND.
5.	LINE_IN_R.	6.	LINE_IN_L.
7.	MIC_IN.	8.	GND.
9.	GND.	10.	GND.

## • CF1 : Compact Flash Storage Card Socket pin assignment



PIN NO.	DESCRIPTION.	PIN NO.	DESCRIPTION.
1.	GROUND.	26.	CARD DETECT1.
2.	D3.	27.	D11.
3.	D4.	28.	D12.
4.	D5.	29.	D13.
5.	D6.	30.	D14.
6.	D7.	31.	D15.
7.	CS1#.	32.	CS3#.
8.	N/C.	33.	N/C.
9.	GROUND.	34.	IOR#.
10.	N/C.	35.	IOW#.
11.	N/C.	36.	PULL HIGH.
12.	N/C.	37.	IRQ15.
13.	VCC.	38.	VCC.
14.	N/C.	39.	MASTER/SLAVE.
15.	N/C.	40.	N/C.
16.	N/C.	41.	RESET#.
17.	N/C.	42.	IORDY.
18.	A2.	43.	N/C.
19.	A1.	44.	PULL HIGH.
20.	A0.	45.	ACTIVE#.
21.	D0.	46.	PDIAG#.
22.	D1.	47.	D8.
23.	D2.	48.	D9.
24.	N/C.	49.	D10.
25.	CARD DETECT2.	50.	GROUND.

## • CN9 : Power Connector

Pin	DESCRIPTION
1	+12V
2	GND

## • CN3 : Keyboard Lock

CN3	Description
Open	Unlock
Short	Lock

## • CN4 : Case Open

CN4	Description
Open	Normal
Short	Power off

## • CN5 : Power Button Connector

Pin	DESCRIPTION
1	+5VSB
2	Power ON

## • CN6 : Reset Button Connector

Pin	DESCRIPTION
Open	Normal
Short	Reset System

## • CN7 : Inverter Power Connector

PIN NO.	DESCRIPTION
1	+12V
2	+12V
3	GND
4	BKLTEN
5	GND
6	BKLTCTL

## • CN8 : Power ON Pin Header

Pin	DESCRIPTION
1	GND
2	PS ON
3	5VSB

• COM1 : RS-232 Serial port

PIN	DESCRIPTION	PIN	DESCRIPTION
1	-DCD	2	RXD
3	TXD	4	-DTR
5	GND	6	-DSR
7	-RTS	8	-CTS
9	-RI	10	NC



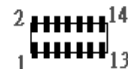
• COM2/3 : RS-232 Serial port (Pin Header)

PIN	DESCRIPTION	PIN	DESCRIPTION
1	-DCD	2	-DSR
3	RXD	4	-RTS
5	TXD	6	-CTS
7	-DTR	8	-RI
9	GND	10	NC



• COM4 : RS-232 with RS-422/485 Serial port(Pin Header)

PIN	DESCRIPTION	PIN	DESCRIPTION
1	-DCD	2	-DSR
3	RXD	4	-RTS
5	TXD	6	-CTS
7	-DTR	8	-RI
9	GND	10	GND
11	TX+	12	TX-
13	RX+	14	RX-



• D3 : Power LED / HDD LED

LED	DESCRIPTION
GREEN	POWER LED
YELLOW	HDD LED



• FAN1: Fan Connector for CPU

PIN NO.	DESCRIPTION
1	GND
2	+12V
3	PWM Signal



• GPIO1: 8 BIT GPIO Connector

PIN	DESCRIPTION	PIN	DESCRIPTION
1	GP10	2	GP11
3	GP12	4	GP13
5	GP14	6	GP15
7	GP16	8	GP17
9	GND	10	VCC



• IR1 : Infrared Pin Header

PIN	Description
1	+5V
2	NC
3	RX
4	GND
5	TX
6	VCC2

• J1 : DDR SODIMM Socket



2.3 CMOS Reset

• JP1 : CMOS pin header

JP1	DESCRIPTION
1-2	Normal Operation
2-3	Clear CMOS

• JP2 : Select CF Master or Slave mode

JP2	Description
Short	Master
Open	Slave

• JP3 : COM1/2 Select RI is 12V or signal

PIN	DESCRIPTION	PIN	DESCRIPTION
1	NR1A	2	NR1A_12V
3	+12V	4	NR1A_12V
5	NR1B	6	NR1B_12V
7	+12V	8	NR1B_12V

• JP4 : Select COM4 is RS232 or RS422/485

JP4	Description
1-2	RS232
2-3	RS422/485

• JP5 : If Short SERIRQ Connect to PC104+ Pin B1

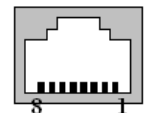
JP5	Description
1	J2 Pin B1
2	SERIRQ

• JP6 : Select LCD Voltage

JP6	Description
1-2	+3.3V
2-3	+5V

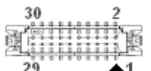
• LAN1 : LAN RJ45 Connector

PIN NO.	DESCRIPTION	PIN NO.	DESCRIPTION
1	TX+	5	N/C
2	TX-	6	RX-
3	RX+	7	N/C
4	N/C	8	N/C



• LVDS1 : LVDS Interface Connector

PIN	DESCRIPTION	PIN	DESCRIPTION
2	GND	1	LVDS_PWR
4	LVDS_CLKBP	3	LVDS_CLKBM
6	LVDS_YBM2	5	GND
8	GND	7	LVDS_YBP2
10	LVDS_YBP1	9	LVDS_YBM1
12	LVDS_YBM3	11	LVDS_YBP3
14	LVDS_YBM0	13	LVDS_YBP0
16	LVDS_CLKAP	15	GND
18	GND	17	LVDS_CLKAM
20	LVDS_YAM2	19	LVDS_YAP2
22	LVDS_YAP1	21	DDCPCLK_X
24	DDCPDATA_X	23	LVDS_YAM1
26	LVDS_YAM0	25	LVDS_YAP0
28	LVDS_YAM3	27	LVDS_YAP3
30	LVDS_PWR	29	LVDS_PWR



• MS\_KB1 : Keyboard Mouse PS2 Port

PIN	DESCRIPTION	PIN	DESCRIPTION
1	KB_DAT	2	MS_DAT
3	GND	4	+5V
5	KB_CLK	6	MS_CLK
7	GND	8	GND



• PRN1: Parallel Port Connector

PIN	DESCRIPTION	PIN	DESCRIPTION
1	STB	14	AFD
2	PDD	15	ERR
3	PD1	16	INIT
4	PD2	17	SLIN
5	PD3	18	GND
6	PD4	19	GND
7	PD5	20	GND
8	PDB	21	GND
9	PD7	22	GND
10	ACK	23	GND
11	BUSY	24	GND
12	PE	25	GND
13	SLCT	26	X



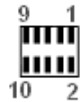
• USB1 : USB Connector

PIN	DESCRIPTION	PIN	DESCRIPTION
1	VCC	5	VCC
2	USB0-	6	USB1-
3	USB0+	7	USB1+
4	GND	8	GND



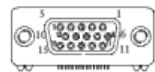
• USB2/3 : USB Connector(Pin header)

PIN	DESCRIPTION	PIN	DESCRIPTION
1	VCC	2	VCC
3	USB3/4_0-	4	USB3/4_1-
5	USB3/4_0+	6	USB3/4_1+
7	GND	8	GND
9	USB_GND	10	USB_GND



• VGA1 : 15-pin D-Sub Connector

PIN	DESCRIPTION	PIN	DESCRIPTION
1	L_RED	2	L_GREEN
3	L_BLUE	4	MON2PU
5	GND	6	GND
7	GND	8	GND
9	+5V	10	GND
11	MONOPU	12	5VDDCA
13	HSYNC	14	VSYNC
15	5VDDCL		



IDE 1 : Secondary IDE Connector (44 Pins)

PIN NO.	DESCRIPTION	PIN NO.	DESCRIPTION
1	RESET#	2	GROUND
3	DATA 7	4	DATA 8
5	DATA 6	6	DATA 9
7	DATA 5	8	DATA 10
9	DATA 4	10	DATA 11
11	DATA 3	12	DATA 12
13	DATA 2	14	DATA 13
15	DATA 1	16	DATA 14
17	DATA 0	18	DATA 15
19	GROUND	20	N/C
21	N/C	22	GROUND
23	IOW#	24	GROUND
25	IOR#	26	GROUND
27	N/C	28	BALE - DEFAULT
29	N/C	30	GROUND - DEFAULT
31	INTERRUPT	32	IOCS16#-DEFAULT
33	SA1	34	N/C
35	SA0	36	SA2
37	HDC CS0#	38	HDC CS1#
39	HDD ACTIVE#	40	GROUND
41	+5V LOGIC	42	+5V MOTOR
43	GROUND	44	TYPE

• SPK1 : Speak out Connector(through Amplifier)

PIN NO.	DESCRIPTION
1	SPKR
2	GND
3	SPKL
4	GND

